



Bishops Way  
London, E2 9HT

£3,500 PCM

  
elms  
ESTATES



Elms Estates are delighted to be able to offer to the market For Let this Four Double Bedroom Apartment situated on the ground floor.

The property is situated within a couple of minutes walk of the Glorious Victoria Park and the Regents Canal which offer Beautiful Open Spaces and Miles of Scenic Walks. The property is also conveniently close to Cambridge Heath Overground Station and Bethnal Green (Central Line) Underground Station is approximately 10 minutes walk away.

Internally the Property offers spacious living accommodation which is modern throughout with a good size reception and separate kitchen. Four double bedrooms and also a bathroom and separate shower room. The property also benefits from Gas Central Heating and Double Glazing Throughout.

For more information or to arrange a viewing please do not hesitate to call in and speak with one of our Property Consultants.



Reception

14'5" x 8'10" (4.4 x 2.7)



Bedroom Three

12'9" x 7'10" (3.9 x 2.4)



Shower room

Kitchen

8'10" x 8'2" (2.7 x 2.5)



Bedroom Four

12'9" x 7'10" (3.9 x 2.4)



Material Information

Deposit: £4,038.46  
Length Of Tenancy: One Year  
Council Tax Band: C

Bedroom One

12'9" x 10'2" (3.9 x 3.1)



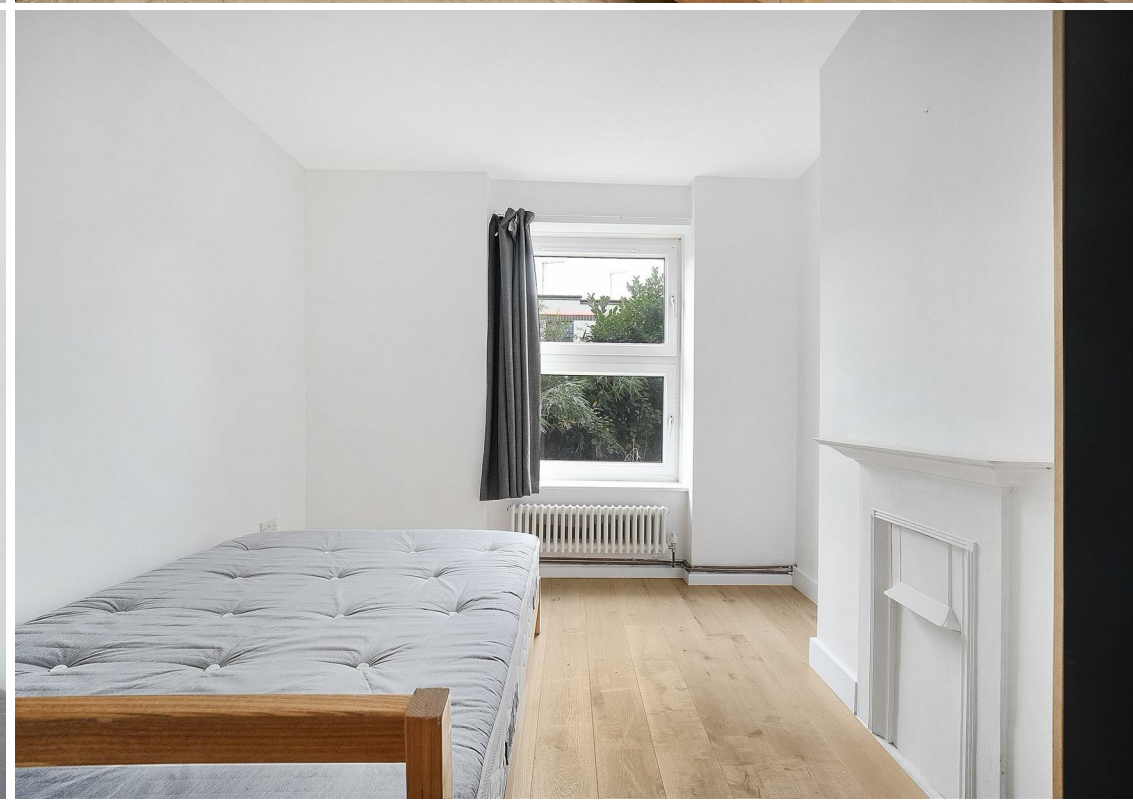
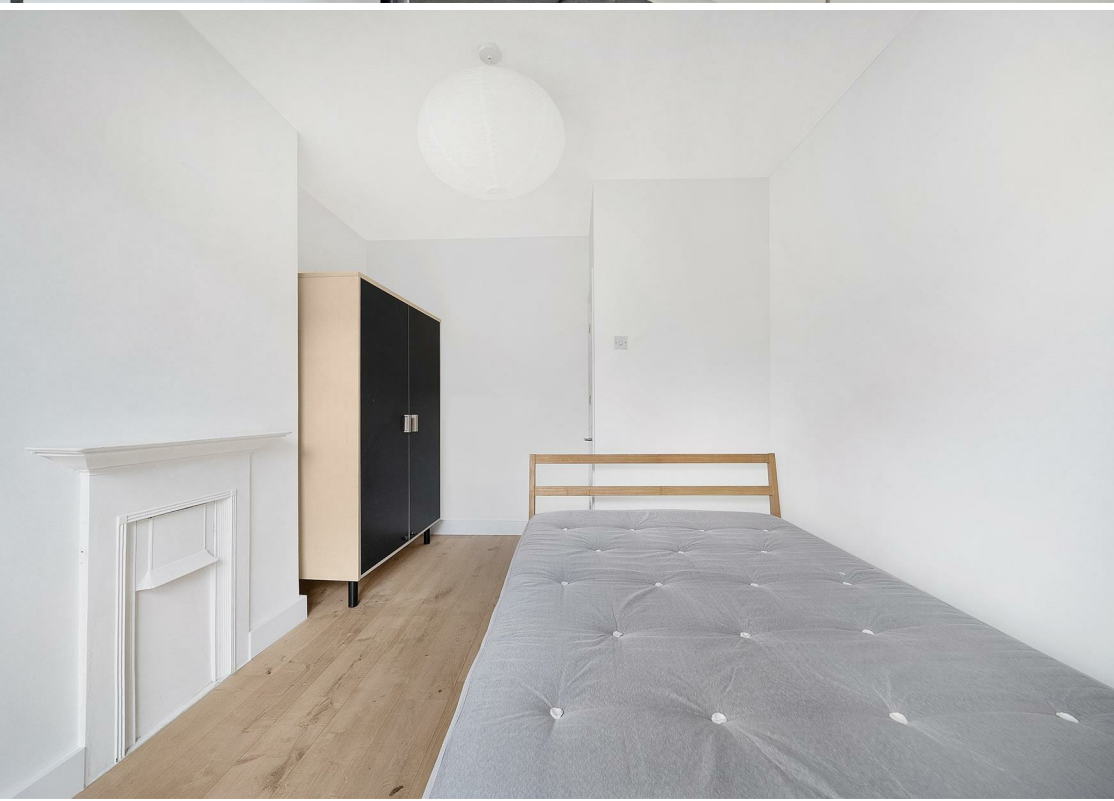
Bedroom Two

12'5" x 9'10" (3.8 x 3.0)



Bathroom



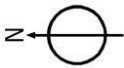
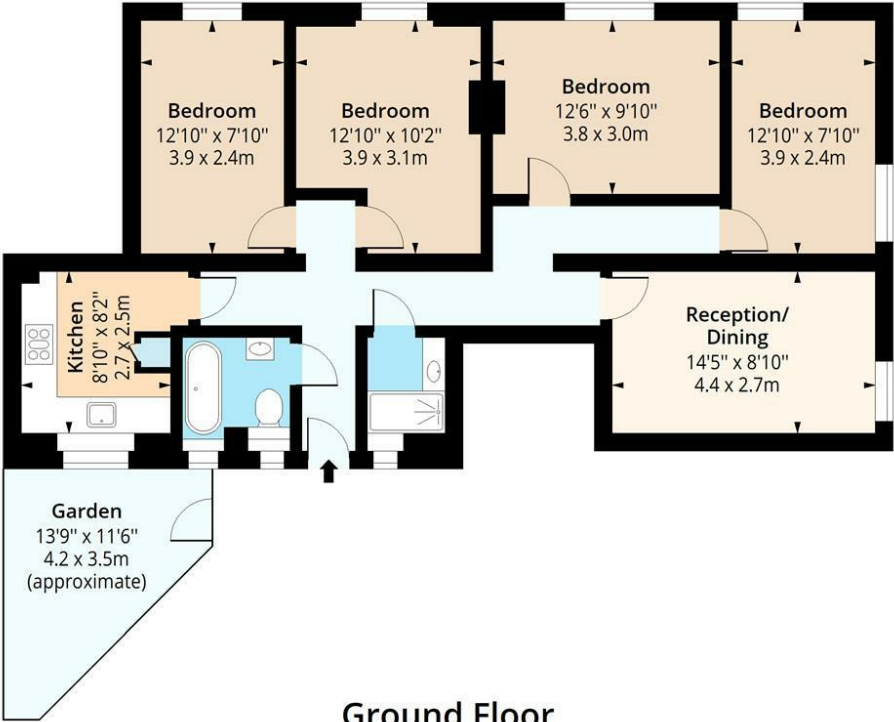




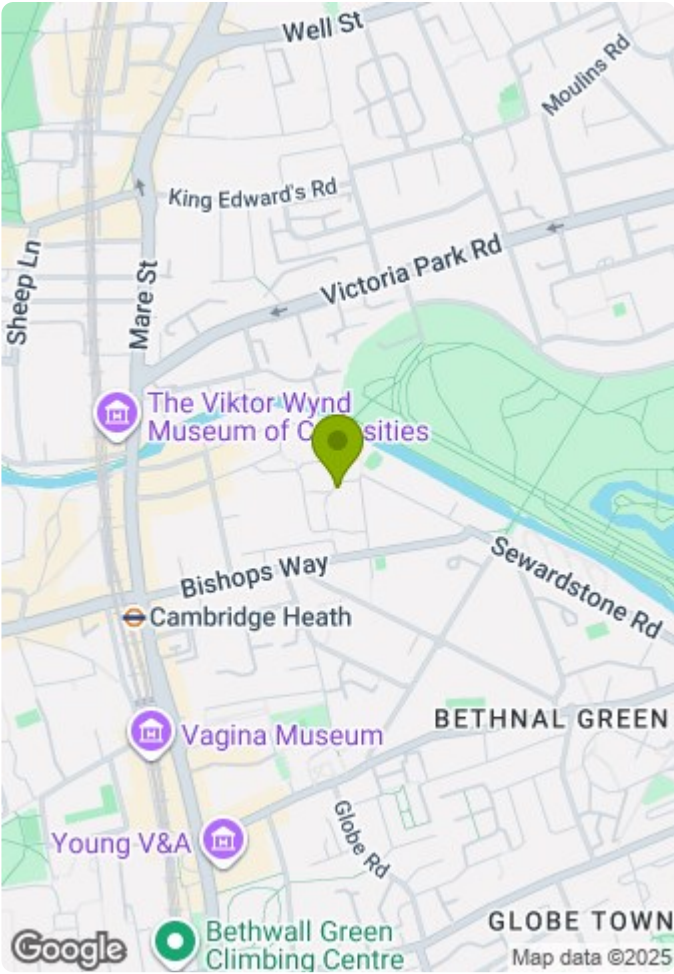


# Maitland House, E2

Approx. Gross Internal Area 917 Sq Ft - 85.19 Sq M



**Ground Floor**  
Floor Area 917 Sq Ft - 85.19 Sq M



Measured according to RICS IPMS2. Floor plan is for illustrative purposes only and is not to scale. Every attempt has been made to ensure the accuracy of the floor plan shown, however all measurements, fixtures, fittings and data shown are an approximate interpretation for illustrative purposes only. 1 sq m = 10.76 sq feet.

lpaplus.com

Date: 6/11/2025

